

# Sigatoka Disease of Banana

## Recognize the problem

Sigatoka disease of banana is one of the devastating diseases affecting the banana crop. It is caused by *Cercospora musae*, which is the conidial stage of a fungus *Mycosphaerella musicola*. The disease is common in almost all districts of Bangladesh especially in banana growing districts.

Initial symptoms of Sigatoka appear in the form of light yellowish spots on the leaves. A small number of spots enlarge, become oval and the colour also changes to dark brown. Still later, the centre of the spot dies, turning light grey surrounded by a brown ring. In severe cases, numerous spots coalesce, killing large parts of the leaf. Rainfall, dew and temperature determine the spread of the disease.

## Background

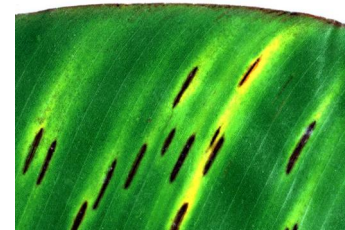
Conditions favouring mass infection are most common during the rainy season with high temperatures (above 25°C) and high humidity. Closer spacing for getting higher yield, especially when grown as single crop favours disease development. Fields where drainage is poor are also more susceptible to the disease.

## Management

The following integrated management practices could be used to minimize the disease.

- Clean cultivation
- Improved drainage system
- Use wider spacing
- Removal of diseased suckers
- Cultivation of resistant variety
- Spray with propiconazole e.g. Tilt, or mancozeb e.g. Dithane M-45 WP (in oil-water emulsion/ water only) as per label, 2-3 times at 15-day intervals
- Foliar spray of copper oxychloride (3g/litre of water) or thiophanate methyl 1 g/ litre of water) also control the disease effectively
- Soil treatment with triadimenol @ 0.75g a.i./plant every 4 months results in a complete control of Sigatoka disease

Early stages on a 'Cavendish' cultivar. (Photo by David Jones)



Severely Sigatoka affected leaf. (Photo by David Jones)



When using a pesticide, always wear protective clothing and follow the instructions on the product label, such as dosage, timing of application, and pre-harvest interval.

Scientific name(s) > **Mycosphaerella musicola**

The recommendations in this factsheet are relevant to: Bangladesh



Authors: M Anwar Hossain, Zahidul Islam, Md. Rafiquzzaman  
SPIED  
tel: 01717-072110, 01711-207380, 01823-035379 email: spied.bd@gmail.com,  
anwarhossain51@gmail.com

Edited by Plantwise.